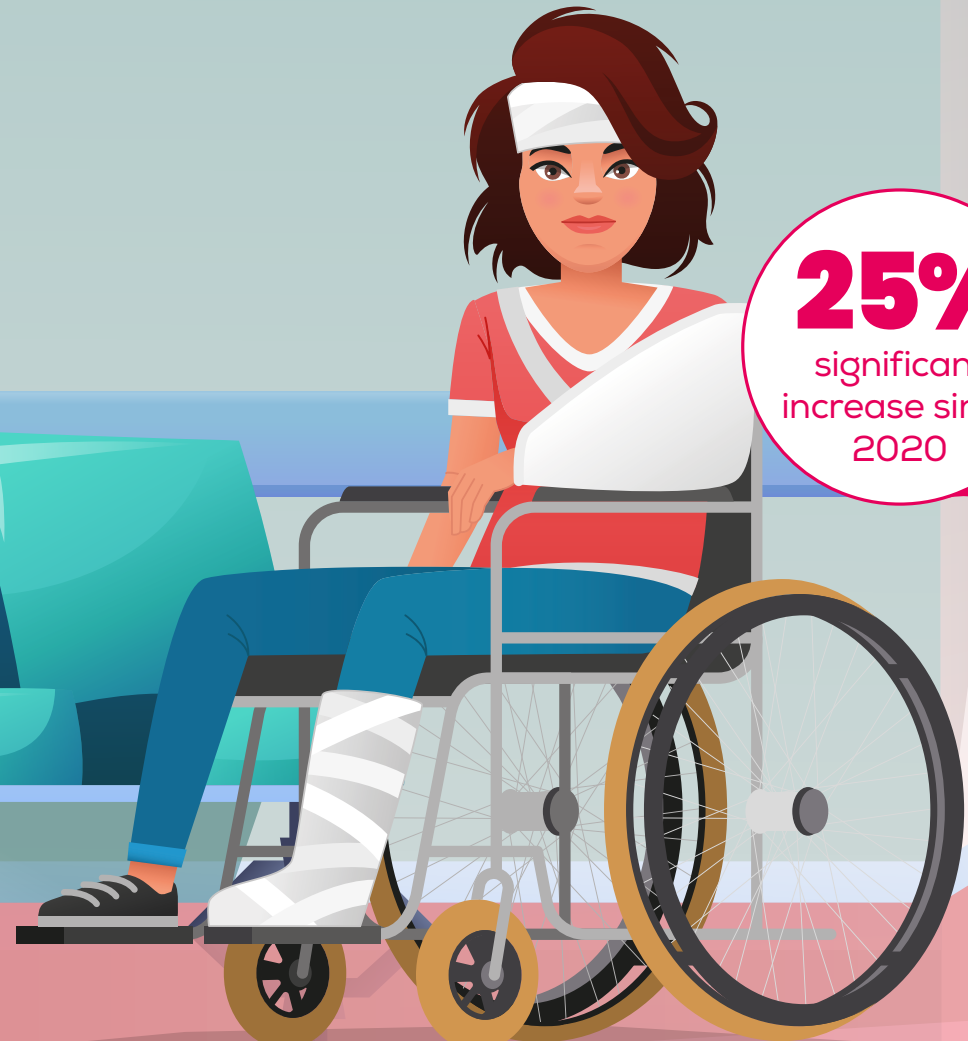
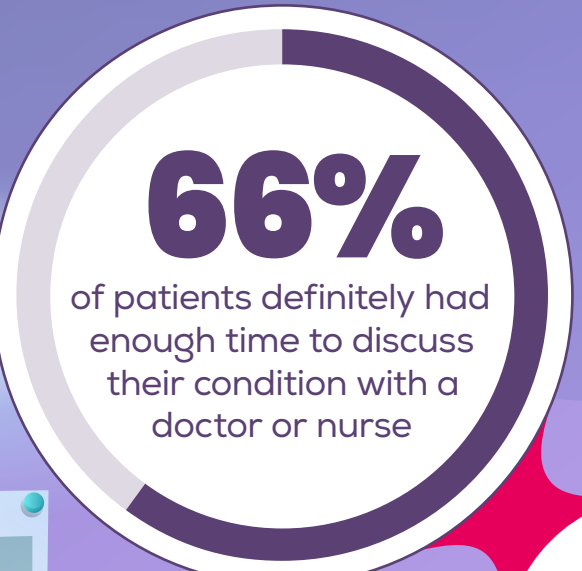
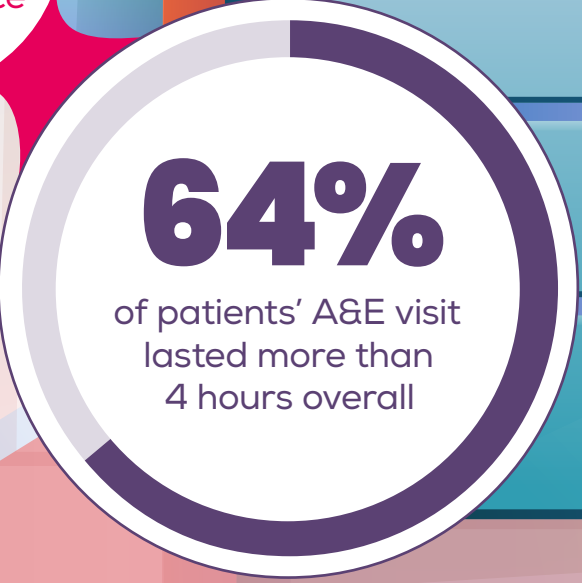
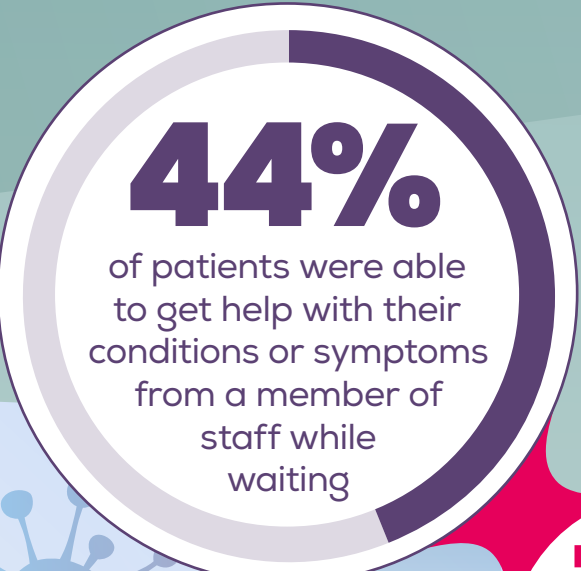
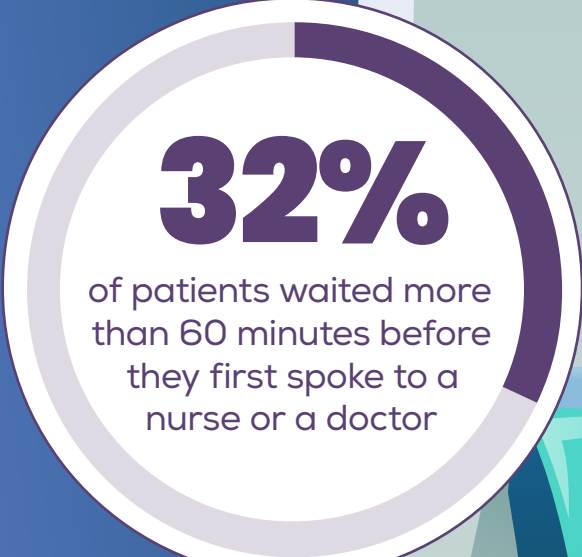


# URGENT & EMERGENCY CARE SURVEY 2022

A Type 1 department is a major, consultant-led A&E department with full resuscitation facilities operating 24 hours a day, 7 days a week. The 2022 survey had 122 NHS Trusts take part, with responses from over 29,000 patients. Feedback from a sample of patients who attended A&E in September 2022.

## TYPE 1 A&E DEPARTMENTS



# URGENT & EMERGENCY CARE SURVEY 2022

A Type 3 department is an urgent treatment centre/ minor injuries unit treating minor injuries and illnesses. They can be doctor or nurse-led and accessed without appointment. The 2022 survey had 59 NHS trusts take part, with responses from 7,418 patients. Feedback was from a sample of patients who attended a Type 3 department in September 2022 (and August 2022 if the sample size was not achieved in September alone).

## TYPE 3 URGENT TREATMENT CENTRES

